

Jacket Maintenance

Perfecting Jackets

MAINTENANCE TIPS

To ensure optimum performance please clean LMC Jackets manually with a suitable wash at least once per shift. Then wipe clean with a damp non abrasive cloth. Avoid using excessive pressure and do not use any kind of tool (e.g. metal or plastic ink knife). Such action may damage the surface and performance of the LMC Jacket. Manual cleaning may be required in addition to any auto wash system.

CLEANING GUIDELINES

Use only Fogra approved chemical solutions. If other chemical solutions are to be used on LMC Jackets then ensure that they have a flash point above 55°C and contain no acetone. In addition they should contain less than 1% aromatic compounds and contain no solid particles. Chemical solutions should have a pH value between 5.0 to 9.0 Ink should never be allowed to dry on to the surface of the jacket.

INSTALLATION INSTRUCTIONS

Only use approved LMC engineers to install LMC Jackets. Contact your local supplier or dealer for more information.
(3M Scotch Seal 800 silicone sealant is available upon request.)

Transfer Jackets

MAINTENANCE TIPS

Maintenance tips. To maintain the specific repellent qualities of the transfer jackets it is vital to clean correctly and remove all ink residues. Clean manually with a suitable wash at least once per shift. Then wipe clean with a damp non abrasive cloth. Avoid using excessive pressure and do not use any kind of tool (e.g. metal or plastic ink knife). Such action may damage the surface & performance of the micro grain jacket.

CLEANING GUIDELINES

Cleaning guidelines. Use only water miscible solutions. Do not use general aggressive chemical solutions (e.g. Ink Stripper or Meter Roller Cleaner). Ink should never be allowed to dry on to the surface of the jacket.

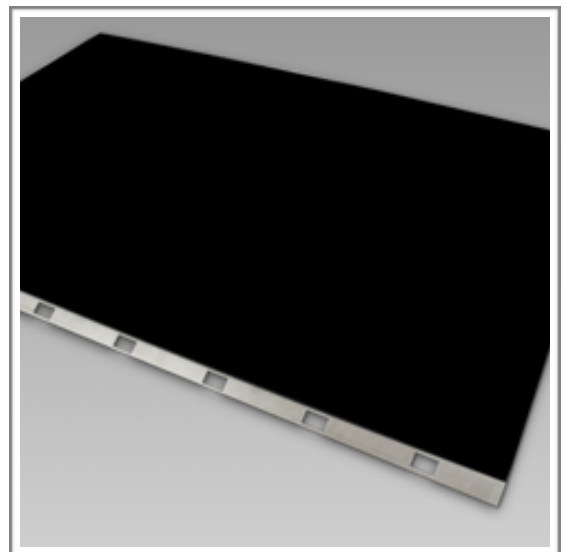
INSTALLATION INSTRUCTIONS

Transfer Jackets should only be installed by a competent engineer. Contact your local supplier for more information. Please note that the textured surface of the jacket will change over time.



LMC Perfecting Jackets - Impression Cylinder

- Heidelberg
- Komori
- Akiyama
- KBA
- Mitsubishi
- manRoland
- Ryobi
- Shinohara



LMC Transfer Jackets - Transfer Cylinder

- Heidelberg
- SM102
 - SM74
 - SM52
 - XL106
 - XL105
 - XL75/CD74
 - SX102
 - SX74
 - SX52