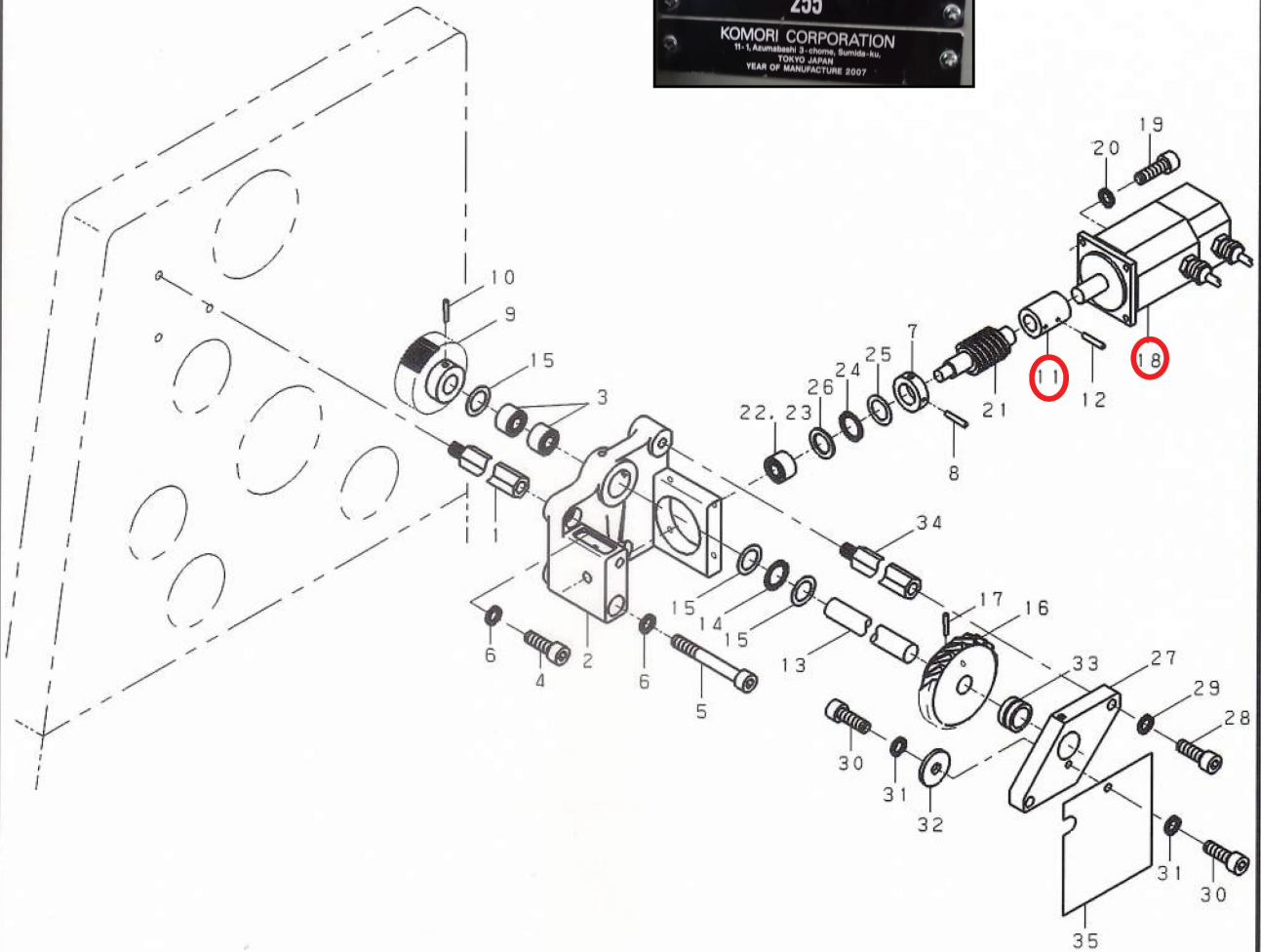


# DETAIL DRAWING

FROM (SERIAL NO)	1C	2C 0102	4C 0152	5C 0185	6C 0122	7C 0101	8C 0101													
ISSUE DATE	2007-04				DRAWING NAME INKING UNIT (INK FOUNTAIN) インキ (ツホ*)										DRAWING NO. 814N4205		PAGE 1/1	S. NO. 04		
KINDS OF MACHINES	LS-29																			

## OUTSIDE OF DRIVE SIDE FRAME



ITEM	PARTS NO.	QTY	PARTS NAME	ITEM	PARTS NO.	QTY	PARTS NAME
1	8144204101	3	PIN	21	3644201500	1	GEAR
2	8144203606	1	BRACKET	22	3BAB101228	1	INNER RACE IRT-1012-2
3	3CJA049017	2	NEEDLE BEARING RNA-4901	23	3CJS014127	1	NEEDLE BEARING TLA-1412
4	6ADD0100303	2	ALLEN CAP SCREW M10X30	24	3CKA015283	1	THRUST NEEDLE BEARIN NTB-1528
5	6ADD0100758	1	ALLEN CAP SCREW M10X75	25	3CKB015282	1	BEARING DISK AS-1528
6	6FFA000106	3	WASHER K-115-1-M10	26	3CKC015281	1	BEARING DISK GS-1528
7	3644201600	1	COLLAR	27	8144205701	1	PLATE
8	6DC0040284	1	SPRING PIN M4X28	28	6AC0080309	2	ALLEN CAP SCREW M8X30
9	8144204500	1	GEAR	29	6FFA000080	2	WASHER K-115-1-M8
10	6DA0050329	1	TAPER PIN M5X32	30	6AC0060103	2	ALLEN CAP SCREW M6X10
11	3544202600	1	COLLAR	31	6FFA000064	2	WASHER K-115-1-M6
12	6DC0040250	2	SPRING PIN M4X25	32	6FD20006A3	1	WASHER K-114-2-M6A
13	8144204801	1	SHAFT	33	3CWA016160	1	NEEDLE BEARING TAF162416-0G
14	3CKA016299	1	THRUST NEEDLE BEARIN NTB-1629	34	8144205800	1	PIN
15	3CKB016298	3	BEARING DISK AS-1629	35	8144206000	1	COVER
16	3644201401	1	GEAR				
17	6DA0050451	1	TAPER PIN M5X45				
18	8145202701	1	MOTOR				
19	6AC0050161	4	ALLEN CAP SCREW M5X16				
20	6FFA000056	4	WASHER K-115-1-M5				