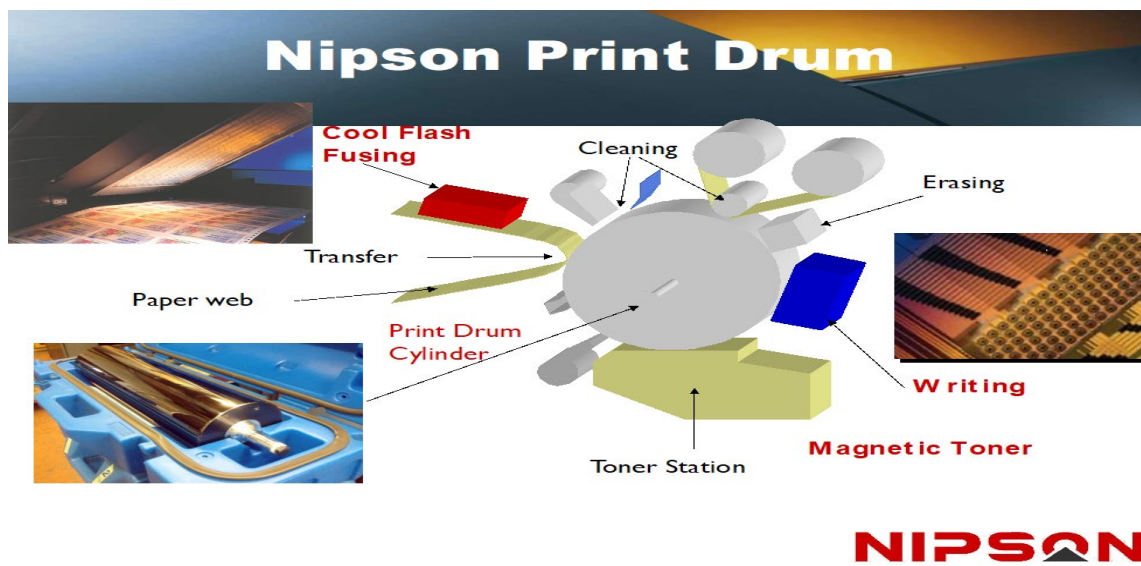
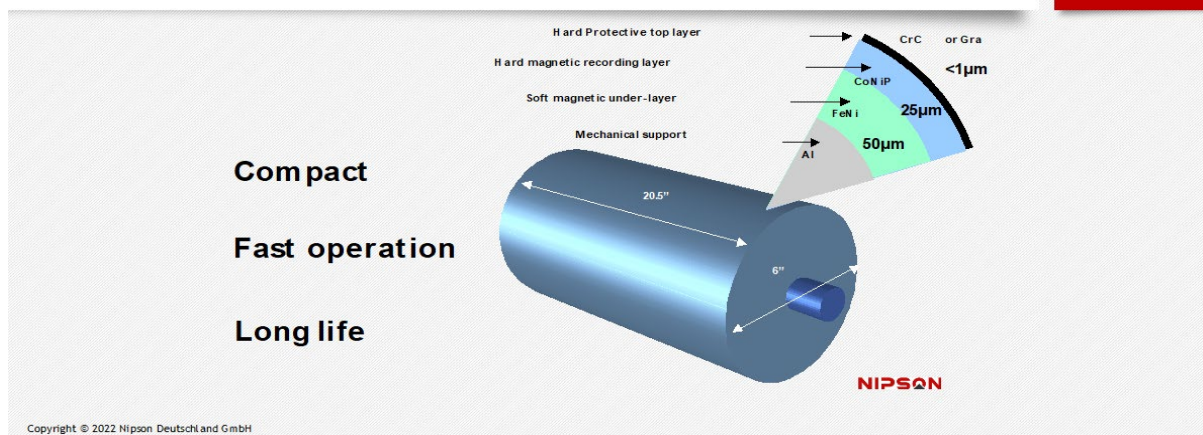


Description of the Drum & Heads 480dpi for Nipson Printer

NIPSON Technology
Digital Printers
Equipped with



Imaging Drum



Above you can see : it is a robust cylinder that composed with many layers to have a sharp printing on the paper

Description of the Drum & Heads 480dpi for Nipson Printer

1. PRESENTATION OF NIPSON AND IT'S TECHNOLOGY

1.1 As flexible as their customers

The Nipson's monochrome digital presses, with their unique magnetographic secure printing technology and cold flash fusing, offer outstanding quality, speed, reliability, and cost benefits for variable content print applications worldwide. ***It is equipped by 480dpi heads and metallic drum absolutely to enable the press to print any document with Nipson Toner***

Nipson's customers around the globe are using the company's proven, reliable, and flexible technology for a wide variety of applications such as statement, check printing, direct mail, tags and label printing, Numbering codes, and security toner identification printing, and on-demand printing of document and books.

Nipson Deutschland GmbH has sales and services are working with a strong Partners for sales and services force, Nipson Deutschland GmbH also markets its products and services through a worldwide network of value-added distributors, covering more than 55 countries.

1.1 The technology: Its uniqueness makes the difference

1.1.1 Magnetography

Is the patented name of the Nipson printing technology used in the High Speed Digital Printing Equipment.

Nipson Technology proven 600x600 dpi or 480dpi x 480dpi magnetographic imaging technology:

- ◆ **A robust magnetisable print drum refer above (cylinder)**
- ◆ **High resolution magnetic writing heads (480dpi)**
- ◆ dry mono-component toner for a clean and ecologic working.

This provides All Nipson's High Speed Printers with an advanced level of print quality, which is maintained through the speed range of each printer, ensuring consistent output with a maximum production.

Description of the Drum & Heads 480dpi for Nipson Printer

NIPSON

NIPSON Heads: 480dpi

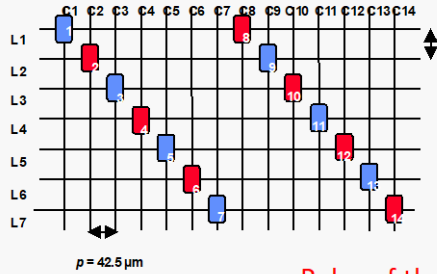
Image of Print head mounted



1- inch silicon chip
rigid cable and connector
co-integrated addressing matrix



Result is



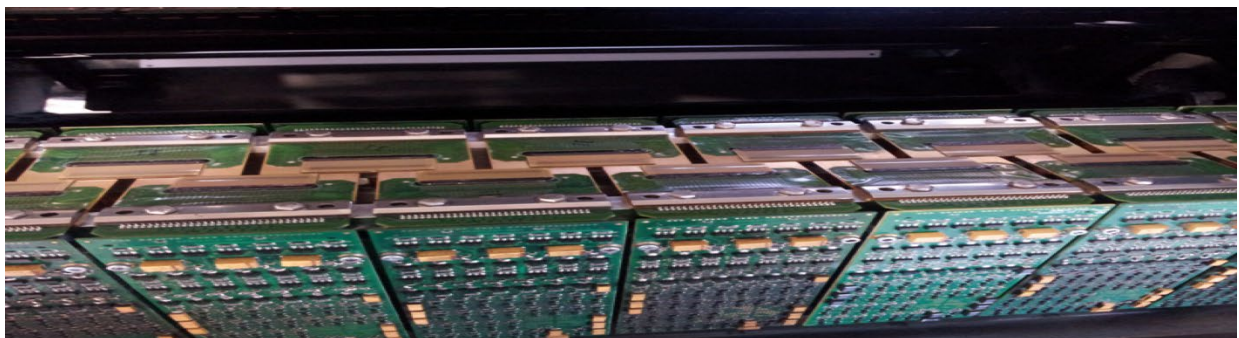
Back of the print head

Poles of the heads when writing on the paper

$p = 42.5 \mu\text{m}$

Copyright Nipson GmbH _ 2020

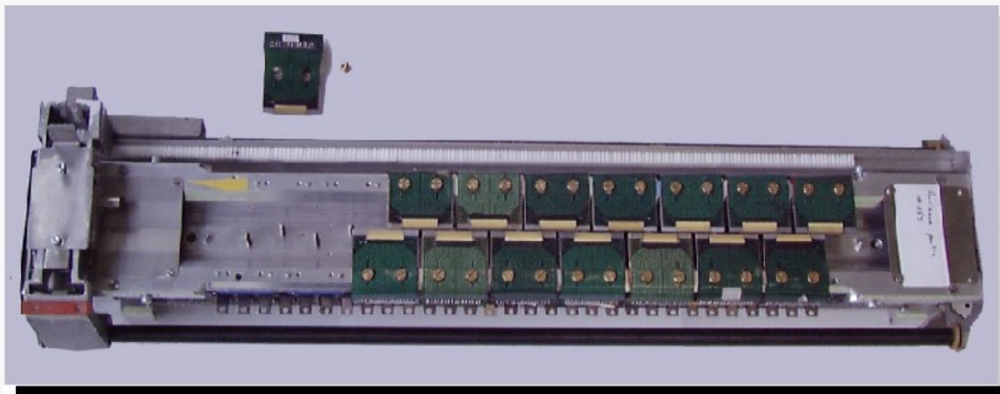
Refer above to the specification of dots that are made when the head is getting signal to print any Computer data



Description of the Drum & Heads 480dpi for Nipson Printer

NIPSON

480 dpi Heads Bar when monted



18 Write Head Modules = 18-inch print width Write Bar

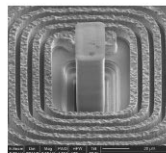
Copyright Nipson GmbH _ 2020

All the heads are mounted this way to enable the printer to print on large format paper

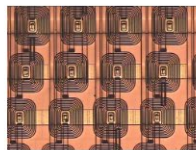
Based on Nipson Technology proven magnetographic printing process, the Nipson presses incorporates an entirely new generation of imaging technology, including re-designed **print-heads**, an improved print **drum construction robust**. The result is a significant advance to reach the quality required via the dpi chosen.

Description of the Drum & Heads 480dpi for Nipson Printer

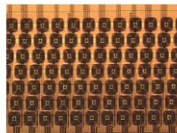
Type Heads 480 dpi



1 writing pole and its electric coil



Coils and poles



1 head



Result :

Increase magnetization of the drum
Fineness of character, precision and sharpness
"Edge effect" clean
Constancy of print quality
Increased reliability

NIPSON

- **Write Head:** It is a magnetic head that is used to transfer the signal of the character on the drum to have the transfer of the images on the media.

Net weight : 0,037 kg

Description:

Head to head is a term used in **printing meaning** that the job is printed with the heads on the media via a printing module composed by drum, head, and toner plus all the parts that are involved in the High Speed Printing mechanism.

Each head is 480dpi per inch ; so the High Speed printer needs 18heads to print in a media of 520cm width

NDP : 8443990

Description of the Drum & Heads 480dpi for Nipson Printer



Nipson printer Press with **DRUM** and **HEADS** is
Like traditional laser...but,

- Without a laser or a photoconductor
- Without exposing the substrate to heat

Like inkjet...but,

- No drying or humidity issues
- Not limited by substrate thickness

For intensive industrial use,

- At high speed
- With extreme ease to operate
- Produces non-erasable prints
- On a broad range of substrates

**Thanks to the Robust Drum and 480dpi
heads**