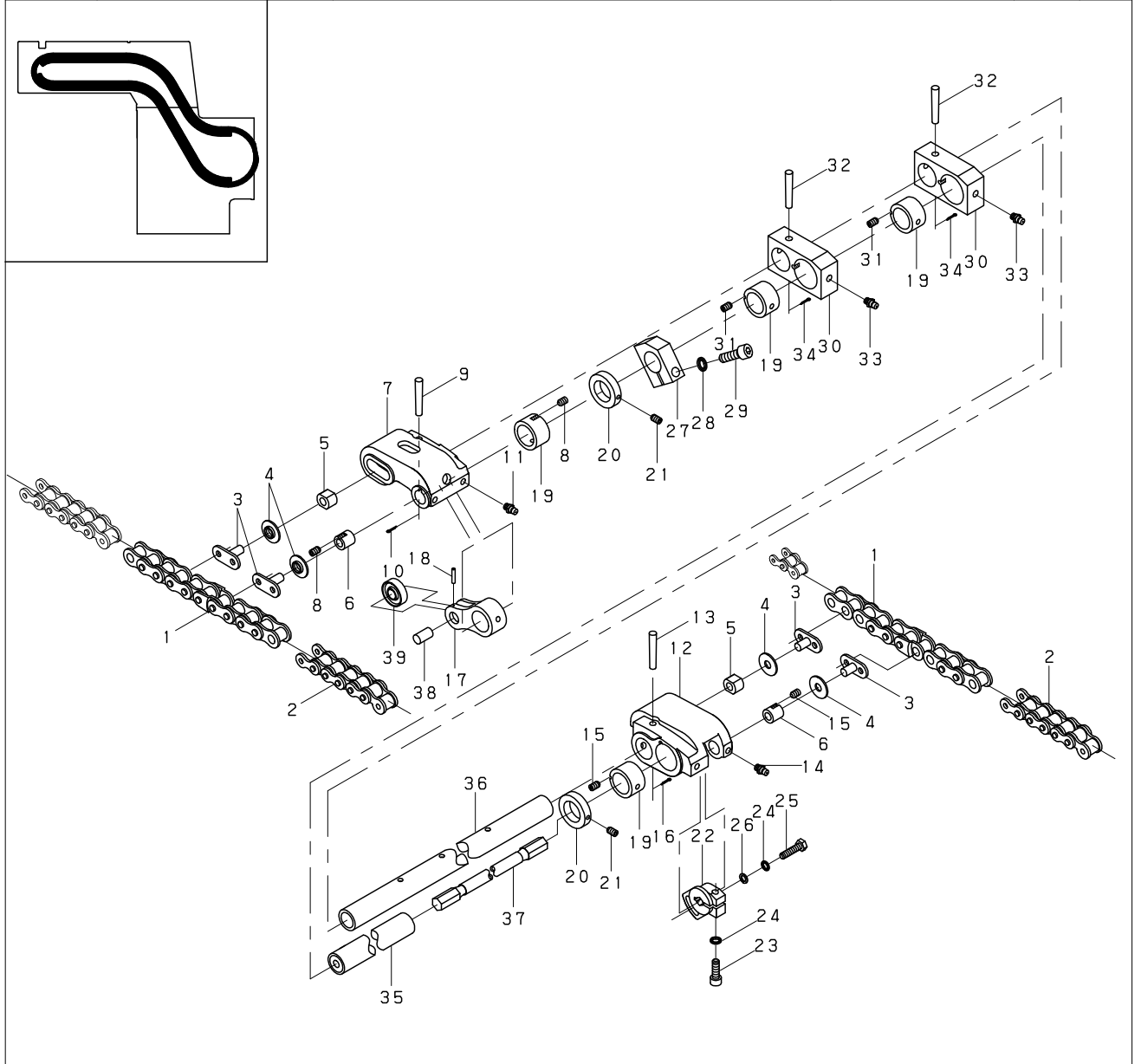


DETAIL DRAWING

FROM (SERIAL NO.)	2C 3001	4C 3001	5C 3001	6C 3001	7C	8C						
ISSUE DATE	2003-02					DRAWING NAME				DRAWING NO.	PAGE	S. NO.
KINDS OF MACHINES	NL-28					DELIVERY (GRIPPER BAR) テ*リハ*リー (爪竿)				184N8301	1/1	00



ITEM	PARTS NO.	QTY	PARTS NAME	ITEM	PARTS NO.	QTY	PARTS NAME
1	3748330400	2	PIECE	21	3Z04000720	2	SCREW M5X6
2	3HN0600220	2	ROLLER CHAIN RS60-22	22	2748312400	1	HOLDER
3	3748331400	4	PIN	23	6AC0060251	1	ALLEN CAP SCREW M6X25
4	3748307400	4	SPACER	24	6FFA000064	2	WASHER K-115-1-M6
5	2748314400	2	BUSHING	25	6AA0060206	1	BOLT M6X20
6	3748304400	2	BUSHING	26	6FD0000060	1	WASHER K-114-M6
7	2748310302	1	BRACKET	27	2748317401	1	STOPPER
8	6BG0040055	2	SCREW M4X5	28	6FFA000080	1	WASHER K-115-1-M8
9	6DA0060450	1	TAPER PIN M6X45	29	6AC0080309	1	ALLEN CAP SCREW M8X30
10	6EA1060128	1	SPLIT PIN M1.6X12	30	2748315400	2	HOLDER
11	6PA0006SR6	2	GREASE NIPPLE M6 (K-123-A) RED	31	6BG0040055	2	SCREW M4X5
12	2748311302	1	BRACKET	32	6DA0060401	2	TAPER PIN M6X40
13	6DA0060450	1	TAPER PIN M6X45	33	6PA0006SR6	2	GREASE NIPPLE M6 (K-123-A) RED
14	6PA0006SR6	2	GREASE NIPPLE M6 (K-123-A) RED	34	6EA1060128	2	SPLIT PIN M1.6X12
15	6BG0040055	2	SCREW M4X5	35	2748301401	1	SHAFT
16	6EA1060128	1	SPLIT PIN M1.6X12	36	2748302403	1	SHAFT
17	2448311004	1	LEVER	37	2748303401	1	TORSION BAR
18	6DC0020203	1	SPRING PIN M2X20	38	3748314400	1	PIN
19	2748313400	4	BUSHING	39	3B06001Z26	1	BALL BEARING 6001ZZ
20	2748316400	2	COLLAR				